



# PONDEROSA ELEMENTARY MORNING ARRIVAL PLAN

In an effort to ensure a safe arrival for all of our students, here is our morning arrival plan. The school building will open at **7:40 AM**.

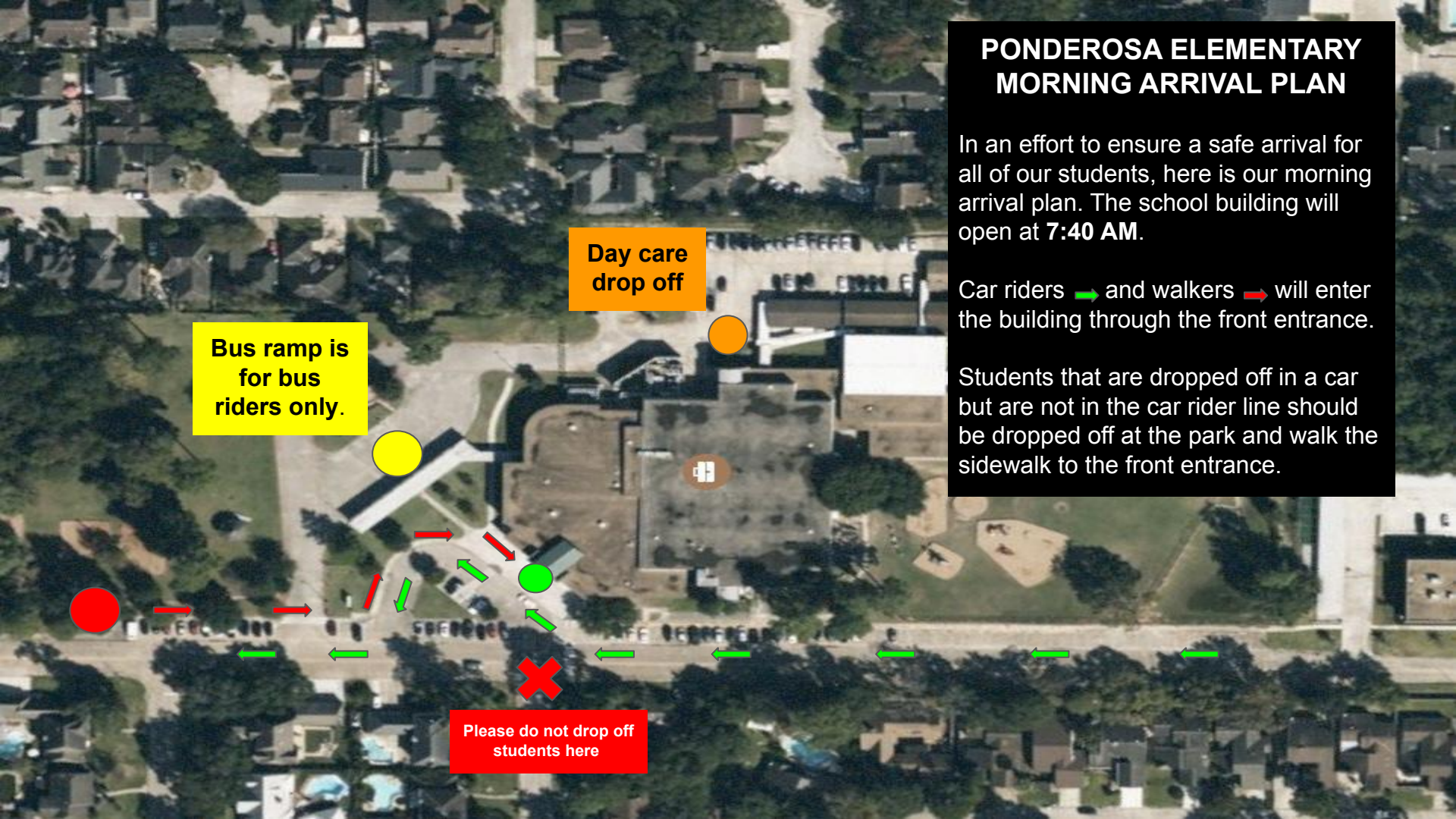
Car riders  and walkers  will enter the building through the front entrance.

Students that are dropped off in a car but are not in the car rider line should be dropped off at the park and walk the sidewalk to the front entrance.

Day care drop off

Bus ramp is for bus riders only.

Please do not drop off students here



## PONDEROSA ELEMENTARY DISMISSAL PLAN

In an effort to ensure a safe dismissal for all of our students, our dismissal will be as follows:

Dismissal will begin at **3:25 PM**.

Car riders will be dismissed from the front entrance ●. Please have your car rider number displayed on your dashboard.

Walkers will be dismissed once all buses have left the campus. North Walkers may be picked up at the gazebo in the park ●. South Walkers will be escorted to the end of the property on the sidewalk ●. All PreK and Kinder walkers must be picked up by a parent or authorized guardian.

Day care  
pick up

Bus ramp is  
for bus  
riders only.

